

DON'T COMPROMISE (2024)



SARVI GREEN ENERGY SOLUTION

Complete Solar Energy Solution



IT IS TO LAUNCH.

Complete Solar Energy Solution

Click For More Details www.sarvigreenenergy.com

Address: WD-2 Dibulganj, Anpara, Sonbhadra, Uttar Pradesh 231225

Contact No- +91 9453917348



SARVI GREEN ENERGY SOLUTION

Complete Solar Energy Solution





SARVI GREEN ENERGY SOLUTION

Complete Solar Energy Solution

Company Profile 2024

ABOUT US

Sarvi Green Energy Solution ISO 9001:2015 Certified one of the Fastest growing turnkeys Solar PV Power Project Company located in India.

The company was incorporated in the year 2023 with its Corporate Headquarters located near India's, Anpara, Sonbhadar (Uttar Pradesh).

We expertise in Residential, Commercial, Industrial, Agriculture and Utility scale Solar projects under CAPEX and RESCO model. Our key geographical operations in are Uttar Pradesh, Madhya Pradesh, Bihar, Jharkhand, Chhatisgad, Rajasthan.



VISION & MISSION

Sarvi Green Energy Solution will design and deliver quality affordable, easy to procure and easy to maintain solar power and solar thermal solutions to domestic, commercial and industrial, Agriculture customers to help them offset costs incurred by deploying conventional, costlier energy resources and build a greener Tomorrow.



VALUES

- Transparency
- Flexibility
- Reliability
- Sustainability

THE SOLUTION WE OFFER

Solar EPC Solution - Residential (Urban domestic and rural consumers) off grid & on grid, Hybrid, Commercial (Hotels, Hospitals, Educational Institutions and



SARVI GREEN ENERGY SOLUTION

(C) Copyright (Print Date) All Rights Reserved

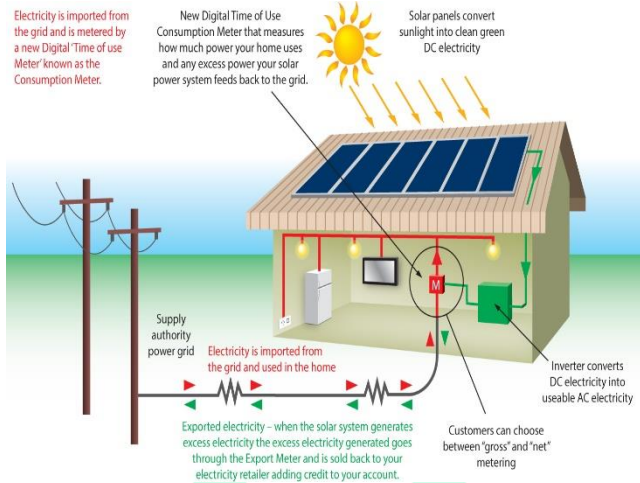


PSU) off grid & on grid and **Industrial** - Multi-vertical industrial clients such as textile, paper, automobile, brewing, sugar and more

Solar Power - All solar power solutions such as home/street lighting, lanterns, pumps, rooftop on-grid and rooftop off-grid, rooftop Hybrid, Solar Chakki .

Solar Thermal - all solar water heating solutions

Decentralize Power Generation along with battery backup Micro Grid and Islanding Technology



Solar Pumping system for Portable water, solar pumping system for Irrigation.



Solar pumping system installation under JAL JEEVAN MISSION (JJM).



Solar Plant O&M Service .



SARVI GREEN ENERGY SOLUTION

(C) Copyright (Print Date) All Rights Reserved



WHAT WE DO?

HOW WILL OUR SOLUTIONS HELP?

Our solutions will help customers offset electricity/power costs that are currently being spent by using costlier (grid, diesel, kerosene) energy sources

Our solutions will be clean, green energy that will contribute to reducing global warming and help make the world a greener place.

OUR DETAIL SCOPE OF WORK

SARVI GREEN ENERGY SOLUTION Management & Organization is completely capable to handle all the projects ranging from 1kW to 200MW and higher capacity utilization projects. SGEs is in association with prominent solar equipment manufacturers & suppliers in India. SGEs helps the clients to select the suitable panels, battery backup systems, required mounting structures, accessories & also liaison with various Government & Departments to get required approvals/subsidizes incentives. SGEs also assures the after sales service for the projects.

SELECTION OF SITE

To provide both government /private land options to meet the Solar Project Developer (SPD)/Client needs for setting up a solar project keeping in mind the technical requirement for solar projects, connectivity, terrain and the type of soil.

To do complete radiation and generation analysis of the site based on the available solar radiation and the solar technology used.

WHAT WE DO?

POWER EVACUATION (PE) SYSTEM PLANNING

PE system planning to include identification of a nearest existing power evacuation (PE) option (interconnection point) with the State Transmission Utility (STU) at the voltage level of 33/66/132 kV or a higher voltage and which is not a distribution sub-station. Preparation of a PE scheme: Schematic diagram along with technical specification from Solar PV Project pooling station to receiving Grid Sub-station.

ENGINEERING AND DESIGN

-Preparation of layout, PVsyst Simulating Design, single line diagrams, CAD's and basic engineering drawing documents.

- Preparation of erection key diagrams, electrical and physical clearance diagrams, design calculations for Earth- mat, Bus Bar

& Spacers, indoor and outdoor lighting/illumination etc.

- Detailed engineering of all components, protection system, switchyard, switchgear, cabling system, LV & DC system, ACDB/DCDB, MC4 Connector.

- Preparation of all Site Execution Drawings / Documents related to Electrical, Mechanical & Civil installation.



SARVI GREEN ENERGY SOLUTION

(C) Copyright (Print Date) All Rights Reserved



WHAT WE DO?

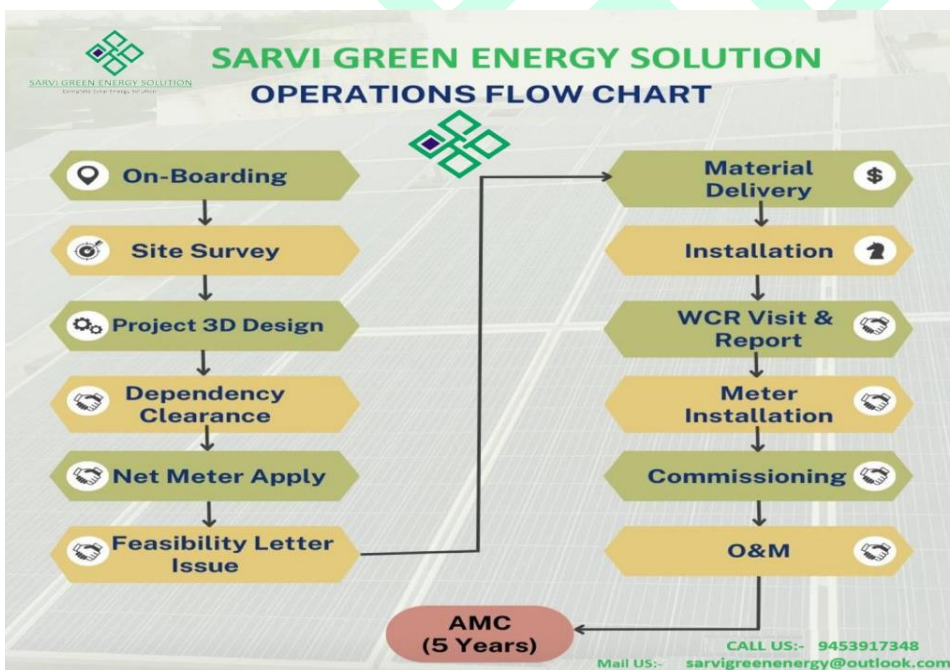
PROCUREMENT ASSISTANCE AND INSPECTION OF ALL MATERIALS

- Preparation of technical specifications of all components, materials and parts to be used for solar power plant installation, BOQ, BOM.
- Getting and negotiating quotes/prices with vendors for different materials to get the best possible pricing. Supervising Procurement of components and ensuring certification of all as per relevant international standards.
- Our Engineers serve on the site to ensure quality and timely procurement of all materials as per specifications in the original contract.

ENGINEERING AND CONSTRUCTION SUPERVISION

- Planning, basic and detailed engineering of the entire system.
- Preparation of the drawings and documents for the execution of the project, proof checking vendor drawings and incorporating them in the system for optimal yield.
- Approval of all interconnection systems
- Scheduling and ensuring the timely completion of the project, including detailed engineering, procurement, erection activities at site pre- commissioning and commissioning activities.
- Review, supervision and responsibility of work at site during the course of project execution.

OUR WORK PROCESS



SARVI GREEN ENERGY SOLUTION

(C) Copyright (Print Date) All Rights Reserved



WHAT WE DO?

SERVICES, OPERATION & RISK MANAGEMENT

- Production of a detailed site plan.
- Calculation of solar resource and environmental characteristics.
- Assessment of shading (horizon and nearby buildings and objects). - Outline layout of areas suitable for PV development.
- Assessment of technology options providing cost benefit for the project location:
- Module type.
- Mounting system.
- Outline system design.
- Application for outline planning permission.
- Grid connection - more detailed assessment of likelihood, cost and timing.
- Predicted energy yields. - Financial modelling.
- Preparation and submission of the permit applications for the proposed solar PV project
- Preparation and submission of a grid connection application.
- Revision of the design and planning permissions.
- Decision on contracting strategy (turnkey EPC contract or multi- contract). - Decision on the financing approach.
- Preparation of solar PV module tender documentation.
- Supplier selection and ranking.
- Preparation of construction tender documentation.
- Contractor selection and ranking. - Contract negotiations.
- Completion of a bankable energy yield.
- Preparation of a financial model covering the full life cycle of the plant.
- Completion of a project risk analysis. - Environmental impact assessment.
- Production of a detailed project report. - Securing financing for the project.

QUALITY POLICY

SARVI GREEN ENERGY SOLUTION strongly believes that our clients are our Business Family Members, and, as such, extends our whole hearted support to them for the whole project life in whatever form that support may be. All levels of SGES Organization are dedicated to the meeting the needs of our clients.

OUR ESTEEMED CLIENT

We are Super Stockiest for the following Inverter.

Growatt, Solis, Sofar, Hitachi, Huawei, Luminous, Microteach.

We are Super Stockiest for the following Panel.

Trina, Waaree, Vikram, Adani, Longi, INA, Luminous.



SARVI GREEN ENERGY SOLUTION

(C) Copyright (Print Date) All Rights Reserved

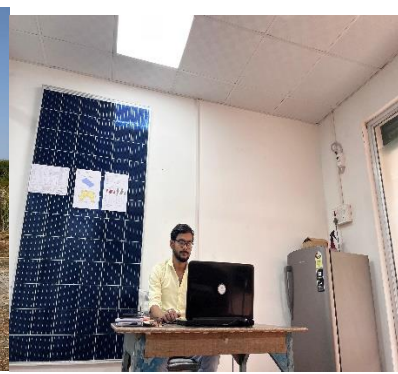


OUR WORK TESTIMONIALS



SARVI GREEN ENERGY SOLUTION
 (C) Copyright (Print Date) All Rights Reserved





Cleck for more Details

Contact +91 9453917348

Mailed sarvigreenenergy@outlook.com

Our Website Sarvi Green Energy

LinkedIn [\(1\) SARVI GREEN ENERGY SOLUTION: Company Page Admin | LinkedIn](#)

Facebook [\(2\) Facebook](#)

Instagram [SARVI GREEN ENERGY SOLUTION \(@sarvigreenenergy\)](#) • Instagram photos and videos

Yuu Tube [SARVI GREEN ENERGY SOLUTIONS - YouTube](#)



SARVI GREEN ENERGY SOLUTION

(C) Copyright (Print Date) All Rights Reserved

